



AFS-TEX[®]

ANTI-FATIGUE SYSTEM



A unique Active Anti-Fatigue range that provides the ultimate combination of standing comfort and body support.

ERGONOMIC PERFORMANCE

MAXIMUM HEALTH SUPPORT

ANTI-MICROBIAL PROTECTION



Put a smile
on your feet.



ERGONOMIC PERFORMANCE

MAXIMUM HEALTH SUPPORT

ANTI-MICROBIAL PROTECTION



Our expert ergonomic development team have designed a range of **active standing surfaces** that make exercise spontaneous and subconscious. They encourage continual movement to stimulates blood flow and increase the body's metabolic rate, for maximum long term performance and fatigue relief.



It is well documented that excessive sitting has major health implications. Likewise, standing more is linked to **improved physical health and mental wellbeing**, which in turn results in improved concentration and productivity.

Extensive research into the consequences of a sedentary working environment has been largely responsible for the dramatic growth in use of standing and height-adjustable desks. This progressive working practice has significant health benefits but also has its issues.

Standing for prolonged periods can put strain on the back and lower body. For users to get the maximum benefit from stand-up working they need the correct ergonomic support.

Floortex's starting point was to develop a material formulation that provides a standing surface with the **correct combination of body support and comfort**.



Extensive scientific research and testing resulted in numerous ergonomic features, designed to **stimulate subconscious movement** on the AFS-TEX[®] range of active anti-fatigue matting.

To maximize the significant benefits of stand-up working, AFS-TEX[®] offers **the ultimate ergonomic solution**.



For more information about the AFS-TEX[®] products in this brochure please visit:
www.afs-tex.com or contact: UK: **info@floortex.com** US: **info@floortexLLC.com**

INTRODUCING THE AFS-**TEX**® ANTI-FATIGUE SYSTEM

A unique Active Anti-Fatigue range designed to provide the ultimate combination of standing comfort and ergonomic body support.

AFS-TEX mats are designed to relieve the strain of prolonged standing by providing a prime mix of mat compression and body support through optimal material depth and firmness.

The cushioned yet supportive standing surface reduces strain on feet, legs, knees and back joints that can be caused by prolonged standing. The unique polyurethane construction of AFS-TEX mats is guaranteed to retain body support over time.

AFS-TEX mats are designed to include features that encourage regular movement of the legs and feet, which in turn can stimulate blood flow and increase the body's metabolism.

AFS-TEX mats contain active anti-microbial technology to protect the product from microbial deterioration. This built-in active ingredient will not wash off or wear away and is effective 24/7 for the life of the product.

Environmentally friendly with non-toxic, phthalate free construction. 100% recyclable.

10 year limited warranty.

The product range

AFS-**TEX**® 2000

Our entry-level anti-fatigue mat designed to relieve the strain of prolonged standing. Features an ergonomically designed print that encourages regular movement.

Two sizes and two colors available.

AFS-**TEX**® 2000_x

Premium specification anti-fatigue mat featuring an ergonomically designed embossed surface to encourage regular movement.

Two sizes and two colors available.

AFS-**TEX**® 3000

High gauge mat featuring a soft polyester cover with inbuilt anti-microbial ingredient to protect the mat from microbial deterioration. Designed for comfort on larger areas to relieve the strain of prolonged standing.

AFS-**TEX**® 3000_x

Premium specification anti-fatigue mat with an ergonomic debossed surface and soft polyester cover to encourage foot movement. Complete with inbuilt anti-microbial ingredient in the mat and cover to protect from microbial deterioration. Designed to relieve the strain of prolonged standing for enhanced comfort on larger areas.

AFS-**TEX**® 4000_x

A compact version of the AFS-TEX 5000 designed specifically for use with standing and height adjustable desks. The ergonomic features of this premium mat actively encourage regular and frequent movement. The non-linear surface incorporates pressure points and a massage bar to relieve strain caused by prolonged standing. Ideal for users under 5'6" and for compact working spaces.

AFS-**TEX**® 5000_x

The ultimate standing surface designed specifically for use with stand-up and height adjustable desks. This premium mat combines ergonomic features to actively encourage movement. A non-linear surface with integral foot massage and ergo-bar stretch facilities, relieve the strain caused by prolonged standing.

Wide format ideal for users over 5' 6" in height or those needed an extended standing area.

AFS-**TEX**® 5000_{s2s}

The perfect ergonomic solution for sit to stand working. The S2S combines an AFS-TEX 5000 anti-fatigue standing surface with a custom designed polycarbonate chair mat.

Ergonomically designed to reduce fatigue while standing and allow easy-glide movement while seated.

AFS-**TEX**® Active Platform

Ergonomically designed to fight fatigue through movement. Encourages leg, foot and joint movement. High gauge body support with deep contours allow roller balls to be manipulated to massage foot soles, stimulate blood flow and reduce fatigue.

AFS-**TEX**® Dynamic

A design based on research into the benefits of fidgeting, this active footrest is designed to be difficult! It massages, rolls and wobbles underfoot, which stimulates lower body movement as you keep it under control. This activity stimulates the metabolism while sitting and when not being moved, the Dynamic can be used to elevate feet and rest the legs.

AFS-TEX[®] 2000

Deep, comfortable and supportive anti-fatigue mat that relieves the strain of prolonged standing. Features an ergonomically designed print that acts as a visual cue to encourage regular movement.



Midnight Black and Slate Grey color options.



Anti-slip base with 'easy-slide' for repositioning



Two size options

Deep cushioned mat with 20° ADA compliant bevelled edge.



Ergonomic print to trigger regular movement for additional fatigue relief.

- High gauge 0.7" (18mm) polyurethane construction.
- The cushioned yet supportive standing surface reduces the strain on feet, legs, knees and back joints that may be caused by prolonged standing.
- Designed to increase comfort levels during prolonged standing while working in the home or office.
- Ergonomically designed print style encourages regular foot movement and changes in standing position to stimulate blood flow and increase the body's metabolism.
- Contains an active anti-microbial ingredient to protect the product from microbial deterioration. Will not wash off or wear away and is effective 24 / 7 for the life of the product.
- Non-toxic and phthalate free. • Recyclable.
- 10 year limited warranty.

Large size
20" x 32" (50 x 80cm)

Standard size:
16" x 24" (40 x 60cm)



AFS-TEX SYSTEM 2000		
Item Ref	Dimensions	Color
FCA21624BK	16" x 24" (40 x 60cm)	Midnight Black
FCA21624GY	16" x 24" (40 x 60cm)	Slate Grey
FCA22032BK	20" x 32" (50 x 80cm)	Midnight Black
FCA22032GY	20" x 32" (50 x 80cm)	Slate Grey

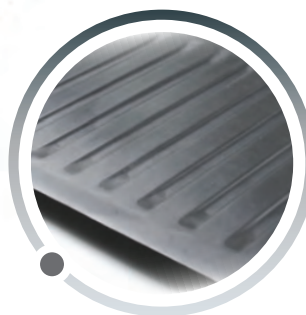


Use when wearing raised heeled footwear will reduce the mats effectiveness and is likely to puncture the mat surface. Damage caused by use while wearing high heels is not covered by the product warranty.

AFS-TEX 2000x New

Advanced standing surface which includes foot massaging contours and raised massage pods.

Ergonomically designed to promote regular movement for superior fatigue relief.



Anti-slip base with 'easy slide' for repositioning



Soft woven cover in black or grey



Recess for stretching feet and legs and mat positioning



Built in hang tag



Regular size
20" x 32" (50 x 80cm)



Compact size:
16" x 24" (40 x 60cm)



- High gauge 0.7" (18mm) polyurethane construction.
- The cushioned yet supportive standing surface reduces the strain on feet, legs, knees and back joints that can be caused through prolonged standing.
- Advanced standing surface includes foot massaging features which encourage regular foot movement and changes in standing position to help reduce fatigue.
- Cut out recess enables foot and calf stretches for added movement and strain relief.
- Recess also facilitates easy movement and positioning.
- Fine but durable polyester cover provides added comfort for barefoot working.
- Active anti-microbial ingredient in the mat body and cover protect the product from microbial deterioration. Will not wash off or wear away and is effective 24 / 7 for the life of the product.
- Non-toxic and phthalate free. • Recyclable.
- 10 year limited warranty.



AFS-TEX SYSTEM 2000X

Item Ref	Dimensions	Color
FCA21624XBK	16" X 24" (40 x 60cm)	Midnight Black
FCA21624XGY	16" X 24" (40 x 60cm)	Slate Grey
FCA22032XBK	20" X 32" (50 x 80cm)	Midnight Black
FCA22032XGY	20" X 32" (50 x 80cm)	Slate Grey



AFS-TEX[®] 3000

AFS-TEX has taken the traditional anti-fatigue mat and given it an upgrade!
This anti-fatigue mat may look conventional, but the comfort it offers is extraordinary.

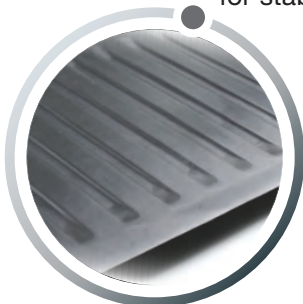
Large size
20" x 39" (50 x 100cm)



Premium gauge with fine polyester cover for added comfort



Contoured, curl-proof edging to ensure it consistently lays flat



Bevelled edging and an anti-slip base for stability and safety



Larger surface for extended standing spaces. Anti-microbial to protect the surface from deterioration

- Premium gauge 0.8" (20mm) polyurethane construction, guaranteed not to lose body support over time.
- Extended width, ideal for general use and for retail and reception counters.
- Fine, durable anti-microbial polyester cover, provides added comfort for barefoot working.
- Active anti-microbial ingredient in the mat body and cover protects the product from microbial deterioration. Will not wash off or wear away and is effective 24 / 7 for the life of the product.
- Anti-slip base for maximum stability in use.
- ADA trip hazard compliant bevelled edging.
- Non-toxic and phthalate free. • Recyclable.
- 10 year limited warranty.



AFS-TEX SYSTEM 3000

Item Ref	Dimensions	Color
FCA32039BM	20" x 39" (50 x 100cm)	Midnight Black



Use when wearing raised heeled footwear will reduce the mats effectiveness and is likely to puncture the mat surface.
Damage caused by use while wearing high heels is not covered by the product warranty.

AFS-TEX® 3000x New

Premium anti fatigue mat with an advanced standing surface to increase standing comfort. Features multiple foot massage areas that encourage regular movement and reduces fatigue.



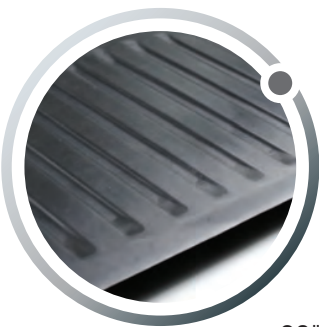
Built in hang tag



Debossed elements to massage feet and encourage micro-movements that relieve fatigue



Premium gauge mat with fine polyester cover for prolonged standing comfort



Anti-slip base with curl-proof bevelled edges for stability and safety



Mat and cover are protected by our unique anti-microbial additive

20" x 39" (50 x 100cm)

- Advanced standing surface. Includes multiple debossed foot massage features which encourage micro-movement and changes in standing position, to help reduce fatigue.
- Premium gauge 0.8" (20mm) polyurethane construction guaranteed not to lose body support over time.
- Extended width, ideal for general use and for retail and reception counters.
- Fine, durable anti-microbial polyester cover provides added comfort for barefoot working.
- Active anti-microbial ingredient in the mat body and cover protect the product from microbial deterioration. Will not wash off or wear away and is effective 24 / 7 for the life of the product.
- Anti-slip base for maximum stability in use. • Non-toxic and phthalate free. • Recyclable.
- 10 year limited warranty.

AFS-TEX SYSTEM 3000X

Item Ref	Dimensions	Color
FCA32039XBM	20" x 39" (50 x 100cm)	Midnight Black

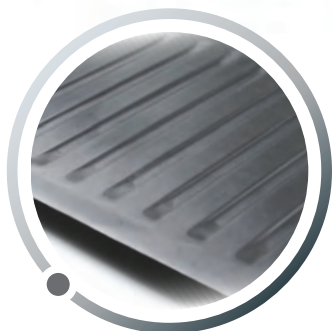


Use when wearing raised heeled footwear will reduce the mats effectiveness and is likely to puncture the mat surface. Damage caused by use while wearing high heels is not covered by the product warranty.



AFS-TEX 4000x New

A standing desk will help you stand more – AFS-TEX 4000X will help you stand better! Designed specifically for use with standing desks, this ergonomic standing surface provides outstanding comfort by combining massage features and stretch areas on an uneven surface to encourage continual movement.



Anti-slip base with 'easy-slide' profile for repositioning



20" x 30" (50 x 70cm)
Perfect for compact offices



Built in hang tag



Recess with 'Ergo-Bar' for foot flexing, calf stretching and easy mat positioning

- Ergonomically designed specifically for use with standing desks to provide exceptional comfort and fatigue relief.
- Contoured non-linear profile of between 0.8" & 2" (20mm & 50mm). Facilitates numerous standing positions and encourages micro-movements, which significantly reduce fatigue.
- Ergo-bar and raised surround features allow further stretching of feet and ankles to stimulate blood flow and increase the body's metabolism for additional fatigue relief.
- Foot massaging contoured features add to long term comfort.
- Rear recess enables easy repositioning.
- The compact size is recommended for users under 5'6" (165cm) and for limited workspaces.
- Fine, durable anti-microbial polyester cover provides added comfort for barefoot working.
- Active anti-microbial ingredient in the mat body and cover protect the product from microbial deterioration. Will not wash off or wear away and is effective 24 / 7 for the life of the product.
- Anti-slip base for maximum stability in use.
- Non-toxic and phthalate free.
- Recyclable.
- 10 year limited warranty.



AFS-TEX SYSTEM 4000X

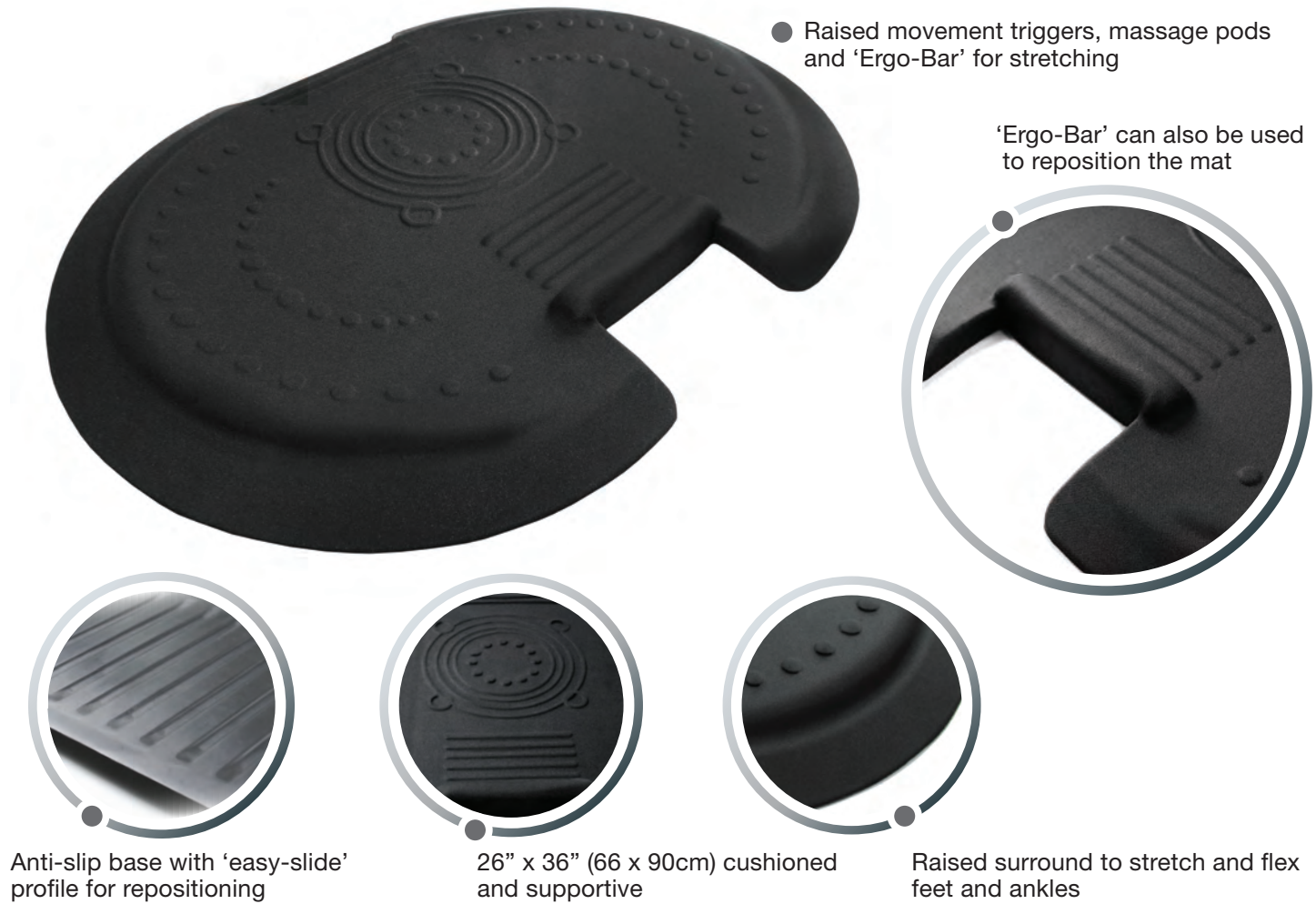
Item Ref	Dimensions	Color
FCA42030XBK	20" x 30" (50 x 76cm)	Midnight Black



Use when wearing raised heeled footwear will reduce the mats effectiveness and is likely to puncture the mat surface. Damage caused by use while wearing high heels is not covered by the product warranty.

AFS-TEX[®] 5000x New

Created specifically for use with standing desks, this premium standing surface is designed to encourage movement. Regular movement helps stimulate blood flow, increase metabolism and reduce fatigue. Using the AFS-TEX 5000x enables users to stand comfortably and productively at their standing desk for longer.



- The ultimate ergonomic standing surface for use with standing desks, for exceptional comfort and fatigue relief.
- The cushioned yet supportive standing surface reduces the strain on feet, legs, knee and back joints that may be caused through prolonged standing.
- Contoured non-linear profile of between 0.8 " & 2" (20mm & 50mm). Encourages micro-movements and regular changes in stance, which significantly reduce fatigue.
- Ergo-bar and raised surround allows stretching of feet and ankles. This stimulates blood flow, increases the body's metabolism and provides additional fatigue relief.
- Foot massaging contoured features add to long term comfort.
- Rear recess enables easy repositioning.
- Fine, durable polyester cover provides added comfort for barefoot working.
- Active anti-microbial ingredient in the mat body and cover protect the product from microbial deterioration. Will not wash off or wear away and is effective 24 / 7 for the life of the product.
- Larger standing area recommended for users over 5' 6" (165cm) and for extended movement along a workstation.
- Anti-slip base for maximum stability in use. • Non-toxic and phthalate free. • Recyclable. • 10 year limited warranty.

AFS-TEX SYSTEM 5000X		
Item Ref	Dimensions	Color
FC5XBK2535	26" x 36" (66 x 90cm)	Midnight Black



Use when wearing raised heeled footwear will reduce the mats effectiveness and is likely to puncture the mat surface. Damage caused by use while wearing high heels is not covered by the product warranty.



AFS-TEX 5000s2s

The ultimate ergonomic combination for sit to stand working at height adjustable desks.

The AFS-TEX 5000x standing surface provides prolonged comfort while standing and a custom made polycarbonate chair mat allows easy glide movement while sitting on a caster based chair. No single mat can provide a solution for both sit & stand ergonomic support.

Anti-slip base with an 'easy slide' profile to make repositioning easy



● Carpet and hard floor options available.



Use your toes to push the mat under the desk when sitting down

Use your heel on the Ergo-Bar to pull the mat out when you want to stand up

For standing work:

- The AFS-TEX 5000x is our premium anti-fatigue mat specifically designed for standing desk use.
- Incorporates a range of ergonomic features to encourage micro-movements for prolonged comfort.
(See page 10 for full details)
- Ergo-Bar feature provides a push-pull facility to store and retrieve the mat when alternating between sitting and standing.

For seated work:

- The Ultimat is our top-performing polycarbonate chair mat. It provides an ergonomic easy glide surface to reduce leg and back strain while seated.
- Protects flooring from damage caused by chair casters and footwear.
- Polycarbonate has twice the impact strength of PVC and will not crack, curl, cup or discolour in normal use.



AFS-TEX SYSTEM 5000s2s			
Item Ref	Dimensions	Floor Type	5000x Color
FCA11S	Chair Mat: 38" x 62" (96 x 157cm) + AFS-TEX 5000: 26" x 36" (66 x 90cm)	Low/Medium Pile Carpet	Midnight Black
FCA12S	Chair Mat: 38" x 62" (96 x 157cm) + AFS-TEX 5000: 26" x 36" (66 x 90cm)	Hard Floor	Midnight Black



Care should be taken to position your AFS-TEX 5000 mat under the desk when not in use to eliminate the possibility of tripping to passing traffic. Use when wearing raised heeled footwear will reduce the mat's effectiveness and is likely to puncture the mat surface. Damage caused by use while wearing high heels is not covered by the product warranty.

AFS-TEX® Active Platform New

Designed to eliminate fatigue through movement and massage – perfect for standing desk users. This mat provides unbeatable anti-fatigue performance, thanks to its moveable roller balls and deep, supportive structure.



- The ultimate active anti-fatigue mat for dynamic workplaces.
- Deep gauge mat structure ensures comfort and support for the back, feet, legs and joints.
- This design is based on research into the health benefits of standing and NEAT** movements.
- Works on the principle of ergonomics and movement, to significantly reduce fatigue while standing.
- Recommended for all standing desk users, particularly effective for those who enjoy working without footwear.
- Features deep contours which combine with a unique curved groove, in which massage balls can be rolled using the feet to create a massage effect.
- Controlling the balls with your feet stimulates blood flow and increases the body's metabolism.
- Fine, durable anti-microbial polyester cover, provides added comfort for barefoot working.
- Active anti-microbial ingredient protects the product from microbial deterioration. Will not wash off or wear away and is effective 24 / 7 for the life of the product.
- Anti-slip base for maximum stability in use. • Non-toxic and phthalate free. • Recyclable. • 10 year limited warranty.

AFS-TEX ACTIVE PLATFORM

Item Ref	Dimensions	Color
FCA2032PBK	20" x 32" (50 x 80cm)	Midnight Black

* Massage Ball colors may vary

** Non-exercise activity thermogenesis (NEAT) is the energy expended for everything we do that is not sleeping, eating or sports-like exercise.

Use when wearing raised heeled footwear will reduce the mats effectiveness and is likely to puncture the mat surface. Damage caused by use while wearing high heels is not covered by the product warranty.



AFS-TEX[®] Dynamic New

The Dynamic Active Footrest allows you to sit without being sedentary! With a design based on research into the benefits of fidgeting, this active footrest is designed to be difficult!



● 16.5" x 7" (42 x 18cm)

Roll, wobble and nudge around with your feet



Use it to elevate the feet, rest the legs and improve your posture



Massage the soles of your feet



Keep your legs moving while you sit at work or home



- Designed to stimulate lower body movement while sitting to increase the metabolism and reduce fatigue.
- The unstable design rolls and wobbles underfoot meaning you have to keep it under control.
- Increases NEAT* movements to increase metabolism and burn more calories than sitting still.
- When the Dynamic isn't being used actively, it can act as a traditional footrest to elevate feet and rest the legs. This reduces pressure on your lower back and encourages better posture.
- With gentle, controlled rolling, the Dynamic will massage the soles of your feet.
- Contains an active anti-microbial ingredient to protect the product from microbial deterioration 24 / 7 for the life of the product.
- Non-toxic and phthalate free. • Recyclable. • 10 year limited warranty.



AFS-TEX DYNAMIC

Item Ref	Dimensions	Color
FCDA0716BK	16.5" x 7" (42 x 18cm)	Midnight Black

** Non-exercise activity thermogenesis (NEAT) is the energy expended for everything we do that is not sleeping, eating or sports-like exercise.



Use when wearing raised heeled footwear will reduce the mats effectiveness and is likely to puncture the mat surface. Damage caused by use while wearing high heels is not covered by the product warranty.



AFS-TEX[®] is a Floortex[®] brand.

Floortex is a global supplier of innovative surface protection products, with a reputation for high quality manufacture and unsurpassed customer service.

Established over 17 years ago, Floortex is an experienced manufacturer with worldwide coverage through a network of partners and distributors in over 40 countries.

Corporation and manufacturing headquarters are based in the UK, with logistics centres in the USA and Europe.

Floortex manufacturing offers state of the art production facilities backed up by expert technical support and extensive quality control systems. This allows us to produce our innovative ranges to the high standards that our customers have come to expect.



Floortex is proud to have been presented with the Queen's Award for Enterprise: International Trade, 2015.

The Queen's Awards for Enterprise are awarded to businesses for outstanding achievement. It is the highest official UK award for British Businesses.

Floortex is honored to have earned it through our work in International Trade.





www.afs-tex.com

 : info@floortex.com

 : info@floortexLLC.com

 : info@floortex.com





AFS-TEX[®]

ANTI-FATIGUE SYSTEM



USA Head Office
813 Park Avenue, Murfreesboro
TN 37129, USA.
Tel: +1 615 - 225 - 9800



Corporate Head Office – European & Global
10-11 Miller Court, Severn Drive
Tewkesbury, UK. GL20 8DN
Tel: +44 (0) 1684 853 030



Floortex Europe Limited
Europäisches Lager und Logistikzentrum
Eisenbahnstr. 14
68199 Mannheim, Germany.
Tel: +49 (0) 621 729 678-00

www.afs-tex.com

FLOORTEX[®]

s o l u t i o n s



2015

AFS-TEX[®] is a Floortex[®] brand
